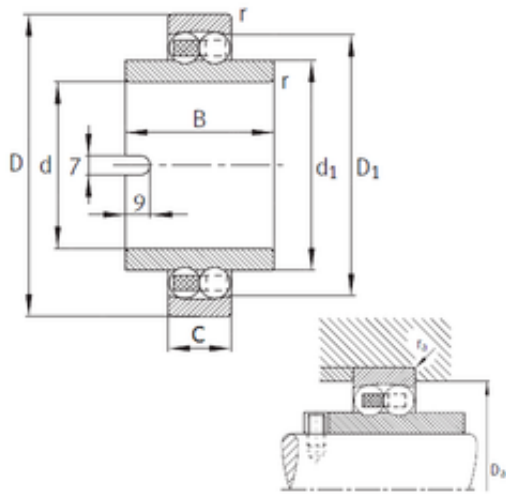




BEARING CORP. OF AMERICA



60 mm x 110 mm x 62 mm FAG 11212-TVH Self Aligning Ball Bearings

Bearing No. 11212-TVH

Size	60x110x62 mm
Bore Diameter	60 mm
Outer Diameter	110 mm
Width	62 mm
d	60 mm
D	110 mm
B	62 mm
C	22 mm
d1	78 mm
r min.	1,5 mm
D1	95,8 mm
Da max.	101 mm
ra max.	1,5 mm
Weight	1,51 Kg
Basic dynamic load rating (C)	30,5 kN
Basic static load rating (C0)	11,4 kN
Fatigue load limit (Pu)	710
Limiting speed	4 500 r/min
Calculation factor (e)	0,18
Calculation factor (Y0)	3,64
Calculation factor (Y1)	3,47

11212-TVH Bearing 2D drawings and 3D CAD models