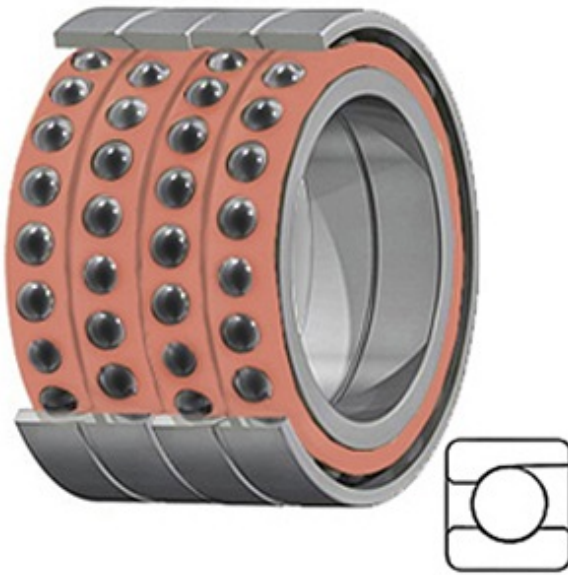




BEARING CORP.OF AMERICA



0.984 Inch | 25 Millimeter x 2.047 Inch | 52 Millimeter x 2.362 Inch | 60 Millimeter TIMKEN 2MMC205WI QUL Precision Ball Bearings

Bearing No. 2MMC205WI QUL

2MMC205WI QUL Bearing 2D drawings and 3D CAD models

Category	Precision Ball Bearings
Inventory	0.0
Manufacturer Name	TIMKEN
Minimum Buy Quantity	N/A
Weight	0.508
EAN	0087796326590
Product Group	B04270
Enclosure	Open
Precision Class	ABEC 7 ISO P4
Material - Ball	Ceramic
Number of Bearings	4 (1 Quadruplex Set)
Contact Angle	15 Degree
Preload	Light
Raceway Style	1 Rib Outer Ring
Cage Material	Phenolic
Rolling Element	Ball Bearing
Mounting Arrangement	Quadruplex-Universal
Flush Ground	Yes
Inch - Metric	Metric
Other Features	Single Row Angular Contact Super High Precision Hybrid Corrosion Resistant Ball
Long Description	25MM Bore; 52MM Outside Diameter; 60MM Width; Open Enclosure;



BEARING CORP.OF AMERICA

	ABEC 7 ISO P4 Precision; Ceramic Ball Material; 4 (1 Quadruplex Set) Bearings; 15 Degree Contact Angle; Phenolic Cage Material; 1 Rib Ou
Category	Precision Ball Bearings
UNSPSC	31171531
Harmonized Tariff Code	8482.10.50.28
Noun	Bearing
Keyword String	Angular Contact Ball
Manufacturer URL	http://www.timken.com
Manufacturer Item Number	2MMC205WI QUL
Weight / LBS	1.12
B	2.362 Inch 60 Millimeter
d	0.984 Inch 25 Millimeter
D	2.047 Inch 52 Millimeter