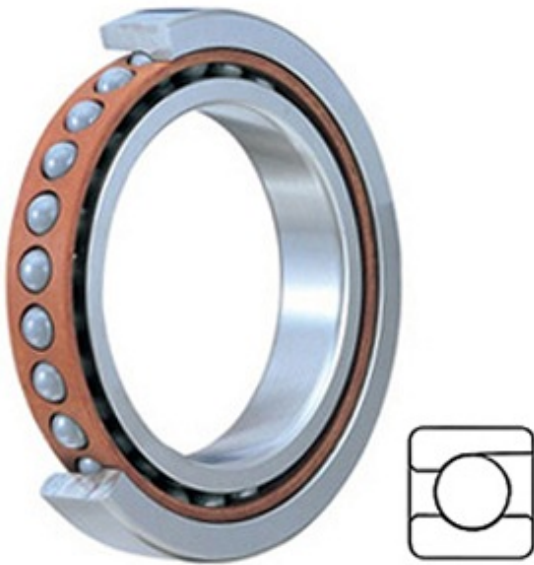




# BEARING CORP.OF AMERICA



3MM9315WI SUL Bearing 2D drawings and 3D CAD models

2.953 Inch | 75 Millimeter x 4.134 Inch | 105 Millimeter x 0.63 Inch | 16 Millimeter TIMKEN 3MM9315WI SUL Precision Ball Bearings

Bearing No. 3MM9315WI SUL

Category	Precision Ball Bearings
Inventory	0.0
Manufacturer Name	TIMKEN
Minimum Buy Quantity	N/A
Weight	0.363
EAN	0087796353923
Product Group	B04270
Enclosure	Open
Precision Class	ABEC 7   ISO P4
Material - Ball	Steel
Number of Bearings	1 (Single)
Contact Angle	25 Degree
Preload	Light
Raceway Style	1 Rib Outer Ring
Cage Material	Phenolic
Rolling Element	Ball Bearing
Mounting Arrangement	Universal
Flush Ground	Yes
Inch - Metric	Metric
Other Features	Single Row   Angular Contact   Super High Precision
Long Description	75MM Bore; 105MM Outside Diameter; 16MM Width; Open Enclosure; ABEC 7   ISO P4 Precision;



## BEARING CORP.OF AMERICA

	Steel Ball Material; 1 (Single) Bearings; 25 Degree Contact Angle; Phenolic Cage Material; 1 Rib Outer Ring Ra
Category	Precision Ball Bearings
UNSPSC	31171531
Harmonized Tariff Code	8482.10.50.28
Noun	Bearing
Keyword String	Angular Contact Ball
Manufacturer URL	<a href="http://www.timken.com">http://www.timken.com</a>
Manufacturer Item Number	3MM9315WI SUL
Weight / LBS	0.8
B	0.63 Inch   16 Millimeter
d	2.953 Inch   75 Millimeter
D	4.134 Inch   105 Millimeter