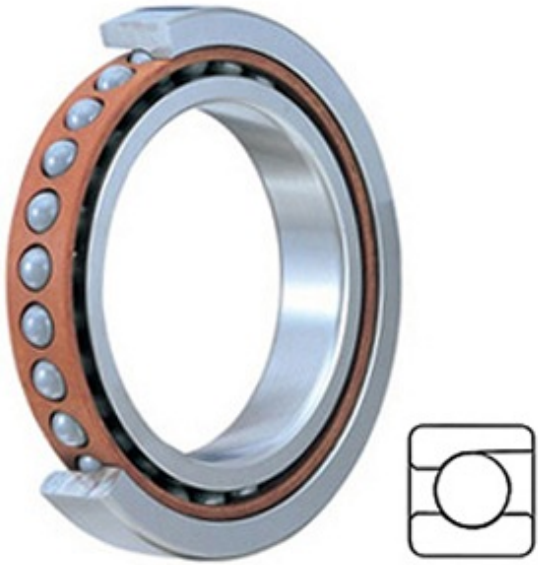




BEARING CORP.OF AMERICA



2MM9338WI SUL Bearing 2D drawings and 3D CAD models

7.48 Inch | 190 Millimeter x 10.236 Inch | 260 Millimeter x 1.299 Inch | 33 Millimeter TIMKEN 2MM9338WI SUL Precision Ball Bearings

Bearing No. 2MM9338WI SUL

Category	Precision Ball Bearings
Inventory	0.0
Manufacturer Name	TIMKEN
Minimum Buy Quantity	N/A
Weight	4.84
Product Group	B04270
Enclosure	Open
Precision Class	ABEC 7 ISO P4
Material - Ball	Steel
Number of Bearings	1 (Single)
Contact Angle	15 Degree
Preload	Light
Raceway Style	1 Rib Outer Ring
Cage Material	Phenolic
Rolling Element	Ball Bearing
Mounting Arrangement	Universal
Flush Ground	Yes
Inch - Metric	Metric
Other Features	Single Row Angular Contact Super High Precision
Long Description	190MM Bore; 260MM Outside Diameter; 33MM Width; Open Enclosure; ABEC 7 ISO P4 Precision; Steel Ball Material; 1 (Single) Bearings; 15 Degree



BEARING CORP.OF AMERICA

	Contact Angle; Phenolic Cage Material; 1 Rib Outer Ring R
Category	Precision Ball Bearings
UNSPSC	31171531
Harmonized Tariff Code	8482.10.50.28
Noun	Bearing
Keyword String	Angular Contact Ball
Manufacturer URL	http://www.timken.com
Manufacturer Item Number	2MM9338WI SUL
Weight / LBS	10.65
B	1.299 Inch 33 Millimeter
D	10.236 Inch 260 Millimeter
d	7.48 Inch 190 Millimeter