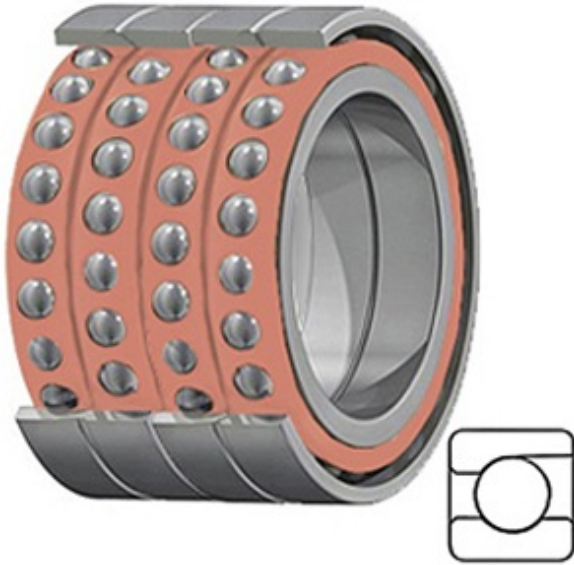




BEARING CORP.OF AMERICA



2MM9306WI QUM Bearing 2D drawings and 3D CAD models

1.181 Inch | 30 Millimeter x 1.85 Inch | 47 Millimeter x 1.417 Inch | 36 Millimeter TIMKEN 2MM9306WI QUM Precision Ball Bearings

Bearing No. 2MM9306WI QUM

Category	Precision Ball Bearings
Inventory	0.0
Manufacturer Name	TIMKEN
Minimum Buy Quantity	N/A
Weight	0.2
EAN	0087796324503
Product Group	B04270
Enclosure	Open
Precision Class	ABEC 7 ISO P4
Material - Ball	Steel
Number of Bearings	4 (1 Quadruplex Set)
Contact Angle	15 Degree
Preload	Medium
Raceway Style	1 Rib Outer Ring
Cage Material	Phenolic
Rolling Element	Ball Bearing
Mounting Arrangement	Quadruplex-Universal
Flush Ground	Yes
Inch - Metric	Metric
Other Features	Single Row Angular Contact Super High Precision
Long Description	30MM Bore; 47MM Outside Diameter; 36MM Width; Open Enclosure; ABEC 7 ISO P4 Precision;



BEARING CORP.OF AMERICA

	Steel Ball Material; 4 (1 Quadruplex Set) Bearings; 15 Degree Contact Angle; Phenolic Cage Material; 1 Rib Oute
Category	Precision Ball Bearings
UNSPSC	31171531
Harmonized Tariff Code	8482.10.50.28
Noun	Bearing
Keyword String	Angular Contact Ball
Manufacturer URL	http://www.timken.com
Manufacturer Item Number	2MM9306WI QUM
Weight / LBS	0.44
D	1.85 Inch 47 Millimeter
B	1.417 Inch 36 Millimeter
d	1.181 Inch 30 Millimeter