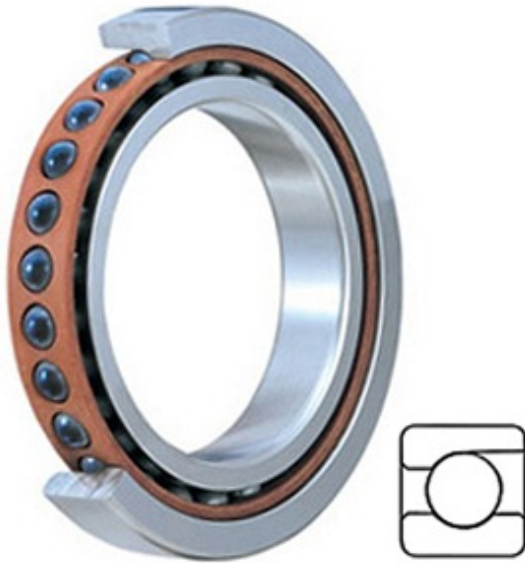




# BEARING CORP.OF AMERICA



4.331 Inch | 110 Millimeter x 6.693 Inch | 170 Millimeter x 1.102 Inch | 28 Millimeter TIMKEN 2MMC9122WI SUH Precision Ball Bearings

Bearing No. 2MMC9122WI SUH

2MMC9122WI SUH Bearing 2D drawings and 3D CAD models

Category	Precision Ball Bearings
Inventory	0.0
Manufacturer Name	TIMKEN
Minimum Buy Quantity	N/A
Weight	2.041
EAN	0087796335929
Product Group	B04270
Enclosure	Open
Precision Class	ABEC 7   ISO P4
Material - Ball	Ceramic
Number of Bearings	1 (Single)
Contact Angle	15 Degree
Preload	Heavy
Raceway Style	1 Rib Outer Ring
Cage Material	Phenolic
Rolling Element	Ball Bearing
Mounting Arrangement	Universal
Flush Ground	Yes
Inch - Metric	Metric
Other Features	Single Row   Angular Contact   Super High Precision   Hybrid   Corrosion Resistant Ball
Long Description	110MM Bore; 170MM Outside Diameter; 28MM Width; Open Enclosure;



## BEARING CORP.OF AMERICA

	ABEC 7   ISO P4 Precision; Ceramic Ball Material; 1 (Single) Bearings; 15 Degree Contact Angle; Phenolic Cage Material; 1 Rib Outer Ring
Category	Precision Ball Bearings
UNSPSC	31171531
Harmonized Tariff Code	8482.10.50.28
Noun	Bearing
Keyword String	Angular Contact Ball
Manufacturer URL	<a href="http://www.timken.com">http://www.timken.com</a>
Manufacturer Item Number	2MMC9122WI SUH
Weight / LBS	4.5
B	1.102 Inch   28 Millimeter
D	6.693 Inch   170 Millimeter
d	4.331 Inch   110 Millimeter