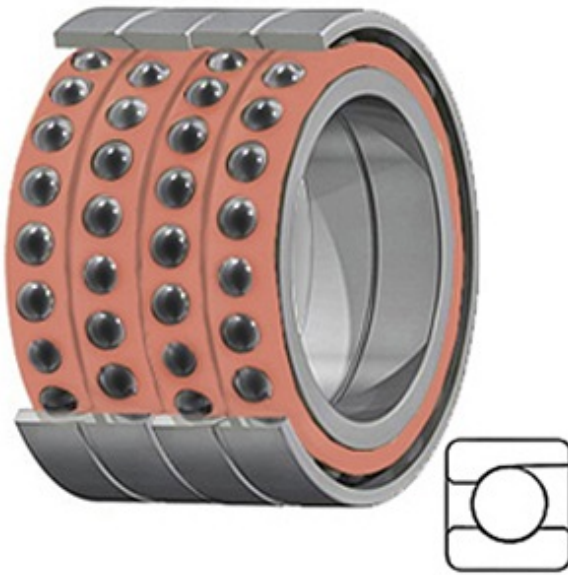




BEARING CORP.OF AMERICA



2.953 Inch | 75 Millimeter x 4.528 Inch | 115 Millimeter x 3.15 Inch | 80 Millimeter TIMKEN 3MMC9115WI QUH Precision Ball Bearings

Bearing No. 3MMC9115WI QUH

3MMC9115WI QUH Bearing 2D drawings and 3D CAD models

Category	Precision Ball Bearings
Inventory	0.0
Manufacturer Name	TIMKEN
Minimum Buy Quantity	N/A
Weight	2.558
EAN	0087796342804
Product Group	B04270
Enclosure	Open
Precision Class	ABEC 7 ISO P4
Material - Ball	Ceramic
Number of Bearings	4 (1 Quadruplex Set)
Contact Angle	25 Degree
Preload	Heavy
Raceway Style	1 Rib Outer Ring
Cage Material	Phenolic
Rolling Element	Ball Bearing
Mounting Arrangement	Quadruplex-Universal
Flush Ground	Yes
Inch - Metric	Metric
Other Features	Single Row Angular Contact Super High Precision Hybrid Corrosion Resistant Ball
Long Description	75MM Bore; 115MM Outside Diameter; 80MM Width; Open Enclosure;



BEARING CORP.OF AMERICA

	ABEC 7 ISO P4 Precision; Ceramic Ball Material; 4 (1 Quadruplex Set) Bearings; 25 Degree Contact Angle; Phenolic Cage Material; 1 Rib O
Category	Precision Ball Bearings
UNSPSC	31171531
Harmonized Tariff Code	8482.10.50.28
Noun	Bearing
Keyword String	Angular Contact Ball
Manufacturer URL	http://www.timken.com
Manufacturer Item Number	3MMC9115WI QUH
Weight / LBS	5.64
D	4.528 Inch 115 Millimeter
d	2.953 Inch 75 Millimeter
B	3.15 Inch 80 Millimeter