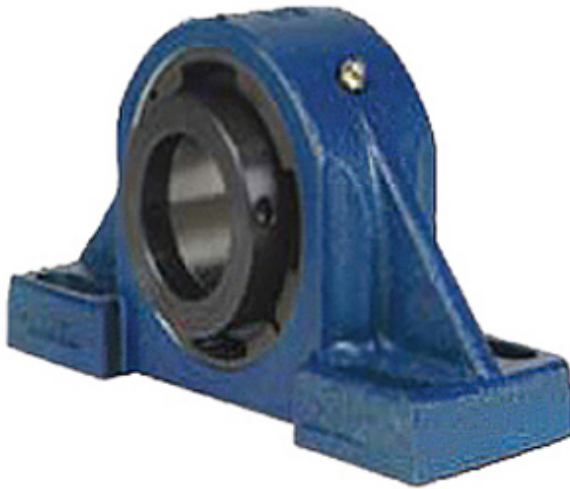




BEARING CORP.OF AMERICA



2.688 Inch | 68.275 Millimeter x 3.62 Inch |
 91.948 Millimeter x 3.25 Inch | 82.55 Millimeter
 QM INDUSTRIES QAPF15A211SO Pillow Block
 Bearings

Bearing No. QAPF15A211SO

QAPF15A211SO Bearing 2D drawings and 3D CAD models

Category	Pillow Block Bearings
Inventory	0.0
Manufacturer Name	TIMKEN
Minimum Buy Quantity	N/A
Weight	9.988
EAN	0883450299145
Product Group	M06288
Number of Mounting Holes	4
Mounting Method	Concentric Collar
Housing Style	4 Bolt Pillow Block
Rolling Element	Spherical Roller Bearing
Housing Material	Cast Steel
Expansion / Non-expansion	Non-expansion
Mounting Bolts	5/8 Inch
Relubricatable	Yes
Insert Part Number	22215
Seals	Triple Lip Urethane
Housing Configuration	1 Piece Solid
Inch - Metric	Inch
Other Features	Double Row Single Collar With Set Screw
Long Description	4 Bolt Pillow Block; 2-11/16" Bore; 3-1/4" Base to Center Height; Concentric Collar Mount;



BEARING CORP.OF AMERICA

	Spherical Roller Bearing; 7.6" Minimum Bolt Spacing; 9.1" Bolt Spacing Maximum; Relubrica
Category	Pillow Block
UNSPSC	31171511
Harmonized Tariff Code	8483.20.40.80
Noun	Bearing
Keyword String	Pillow Block
Manufacturer URL	http://www.qmbearings.com
Weight / LBS	27
Actual Bolt Center to Center	0 Inch 0Millimeter
d	2.688 Inch 68.275 Millimeter
Nominal Bolt Center to Center	8.4 Inch 213 Millimeter
B	3.25 Inch 82.55 Millimeter
Bolt Spacing Minimum	7.6 Inch 193.04Millimeter
D	3.62 Inch 91.948 Millimeter
Bolt Spacing Maximum	9.1 Inch 231.14Millimeter