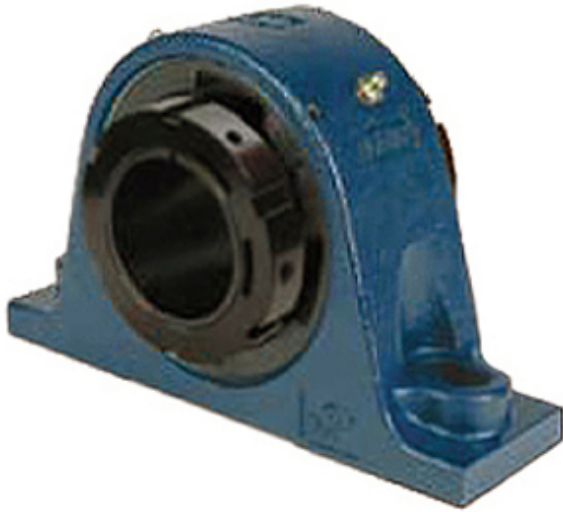




BEARING CORP.OF AMERICA



2.25 Inch | 57.15 Millimeter x 2.56 Inch | 65.024 Millimeter x 3 Inch | 76.2 Millimeter QM
INDUSTRIES TAPKT13K204SEC Pillow Block Bearings

Bearing No. TAPKT13K204SEC

TAPKT13K204SEC Bearing 2D drawings and 3D CAD models

Category	Pillow Block Bearings
Inventory	0.0
Manufacturer Name	TIMKEN
Minimum Buy Quantity	N/A
Weight	8.626
EAN	0883450308540
Product Group	M06288
Number of Mounting Holes	2
Mounting Method	Tapered Adapter Sleeve
Housing Style	2 Bolt Pillow Block
Rolling Element	Spherical Roller Bearing
Housing Material	Cast Steel
Expansion / Non-expansion	Expansion
Mounting Bolts	3/4 Inch
Relubricatable	Yes
Insert Part Number	22213
Seals	Double Lip Viton
Housing Configuration	1 Piece Solid
Inch - Metric	Inch
Other Features	Double Row Extreme Duty
Long Description	2 Bolt Pillow Block; 2-1/4" Bore; 3" Base to Center Height; Tapered Adapter Sleeve Mount; Spherical



BEARING CORP.OF AMERICA

	Roller Bearing; 7.66" Minimum Bolt Spacing; 8.78" Bolt Spacing Maximum; Relubric
Category	Pillow Block
UNSPSC	31171511
Harmonized Tariff Code	8483.20.40.80
Noun	Bearing
Keyword String	Pillow Block
Manufacturer URL	http://www.qmbearings.com
Weight / LBS	22
Bolt Spacing Minimum	7.66 Inch 194.564Millimeter
D	2.56 Inch 65.024 Millimeter
d	2.25 Inch 57.15 Millimeter
Bolt Spacing Maximum	8.78 Inch 223.012Millimeter
Actual Bolt Center to Center	0 Inch 0Millimeter
B	3 Inch 76.2 Millimeter
Nominal Bolt Center to Center	8.2 Inch 208.3 Millimeter