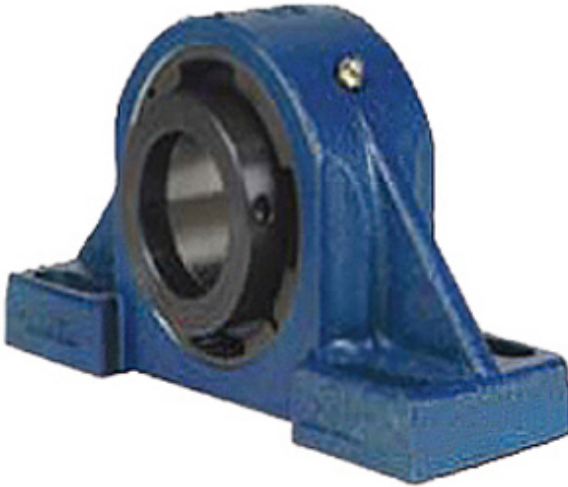




BEARING CORP.OF AMERICA



2.362 Inch | 60 Millimeter x 3.19 Inch | 81.026
Millimeter x 2.756 Inch | 70 Millimeter QM
INDUSTRIES QVPF14V060SEN Pillow Block
Bearings

Bearing No. QVPF14V060SEN

QVPF14V060SEN Bearing 2D drawings and 3D CAD
models

Category	Pillow Block Bearings
Inventory	0.0
Manufacturer Name	TIMKEN
Minimum Buy Quantity	N/A
Weight	7.718
Product Group	M06288
Number of Mounting Holes	4
Mounting Method	V Lock
Housing Style	4 Bolt Pillow Block
Rolling Element	Spherical Roller Bearing
Housing Material	Cast Steel
Expansion / Non-expansion	Expansion
Mounting Bolts	5/8 Inch
Relubricatable	Yes
Insert Part Number	22214
Seals	Triple Lip Viton
Housing Configuration	1 Piece Solid
Inch - Metric	Metric
Other Features	Double Row Single Nut
Long Description	4 Bolt Pillow Block; 60MM Bore; 70MM Base to Center Height; V Lock Mount; Spherical Roller Bearing; 174.625MM Minimum Bolt Spacing; 193.675MM Bolt Spacing Maximum;



BEARING CORP.OF AMERICA

	Relubricatable; Cast Steel; Triple L
Category	Pillow Block
UNSPSC	31171511
Harmonized Tariff Code	8483.20.40.80
Noun	Bearing
Keyword String	Pillow Block
Manufacturer URL	http://www.qmbearings.com
Manufacturer Item Number	QVPF14V060SEN
Weight / LBS	17
B	2.756 Inch 70 Millimeter
Bolt Spacing Maximum	7.625 Inch 193.675Millimeter
Nominal Bolt Center to Center	7.3 Inch 184 Millimeter
D	3.19 Inch 81.026 Millimeter
Bolt Spacing Minimum	6.875 Inch 174.625Millimeter
d	2.362 Inch 60 Millimeter
Actual Bolt Center to Center	0 Inch 0Millimeter