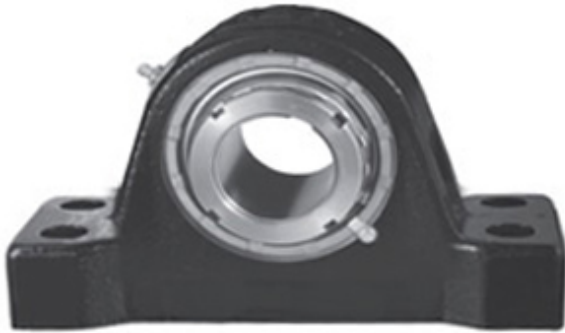




BEARING CORP.OF AMERICA

6 Inch | 152.4 Millimeter x 7.75 Inch | 196.85
 Millimeter x 7.875 Inch | 200.025 Millimeter
 REXNORD ZP9600F Pillow Block Bearings



Bearing No. ZP9600F

ZP9600F Bearing 2D drawings and 3D CAD models

Category	Pillow Block Bearings
Inventory	0.0
Manufacturer Name	REXNORD
Minimum Buy Quantity	N/A
Weight	148.458
EAN	0698210713492
Product Group	M06288
Number of Mounting Holes	4
Mounting Method	Tapered Adapter Sleeve
Housing Style	4 Bolt Pillow Block
Rolling Element	Spherical Roller Bearing
Housing Material	Cast Iron
Expansion / Non-expansion	Non-expansion
Mounting Bolts	1-1/4 Inch
Relubricatable	Yes
Insert Part Number	9600U
Seals	Clearance Seal
Housing Configuration	1 Piece Solid
Inch - Metric	Inch
Other Features	Double Row Extra Heavy Duty
Long Description	4 Bolt Pillow Block; 6" Bore; 7-7/8" Base to Center Height; Tapered Adapter Sleeve Mount; Spherical Roller Bearing;



BEARING CORP.OF AMERICA

	Relubricatable; Cast Iron; Clearance Seal; Non- expansion
Category	Pillow Block
UNSPSC	31171511
Harmonized Tariff Code	8483.20.40.80
Noun	Bearing
Keyword String	Pillow Block
Manufacturer URL	http://www.rexnord.com
Manufacturer Item Number	ZP9600F
Manufacturer Internal Number	6871349
Weight / LBS	327
Bolt Spacing Maximum	0 Inch 0Millimeter
Bolt Spacing Minimum	0 Inch 0Millimeter
D	7.75 Inch 196.85 Millimeter
Actual Bolt Center to Center	23 Inch 584.2Millimeter
B	7.875 Inch 200.025 Millimeter
d	6 Inch 152.4 Millimeter
Nominal Bolt Center to Center	23 Inch 584.2 Millimeter