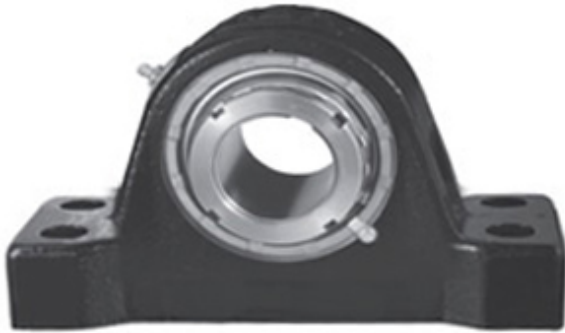




# BEARING CORP.OF AMERICA

1.938 Inch | 49.225 Millimeter x 3.156 Inch |  
80.162 Millimeter x 2.75 Inch | 69.85 Millimeter  
REXNORD ZPS9115F Pillow Block Bearings



ZPS9115F Bearing 2D drawings and 3D CAD models

Bearing No. ZPS9115F

Category	Pillow Block Bearings
Inventory	0.0
Manufacturer Name	REXNORD
Minimum Buy Quantity	N/A
Weight	9.307
EAN	0698210170202
Product Group	M06288
Number of Mounting Holes	4
Mounting Method	Tapered Adapter Sleeve
Housing Style	4 Bolt Pillow Block
Rolling Element	Spherical Roller Bearing
Housing Material	Cast Iron
Expansion / Non-expansion	Expansion
Mounting Bolts	5/8 Inch
Relubricatable	Yes
Insert Part Number	9115U
Seals	Clearance Seal
Housing Configuration	1 Piece Solid
Inch - Metric	Inch
Other Features	Double Row   Extra Heavy Duty
Long Description	4 Bolt Pillow Block; 1-15/16" Bore; 2-3/4" Base to Center Height; Tapered Adapter Sleeve Mount; Spherical Roller Bearing;



## BEARING CORP.OF AMERICA

	Relubricatable; Cast Iron; Clearance Seal; Expansion
Category	Pillow Block
UNSPSC	31171511
Harmonized Tariff Code	8483.20.40.80
Noun	Bearing
Keyword String	Pillow Block
Manufacturer URL	<a href="http://www.rexnord.com">http://www.rexnord.com</a>
Manufacturer Item Number	ZPS9115F
Manufacturer Internal Number	6817020
Weight / LBS	20.5
Nominal Bolt Center to Center	7.5 Inch   190 Millimeter
d	1.938 Inch   49.225 Millimeter
Actual Bolt Center to Center	7.5 Inch   190 Millimeter
D	3.156 Inch   80.162 Millimeter
Bolt Spacing Maximum	0 Inch   0 Millimeter
B	2.75 Inch   69.85 Millimeter
Bolt Spacing Minimum	0 Inch   0 Millimeter